

# Pediatric elbow

## Radiographic Series

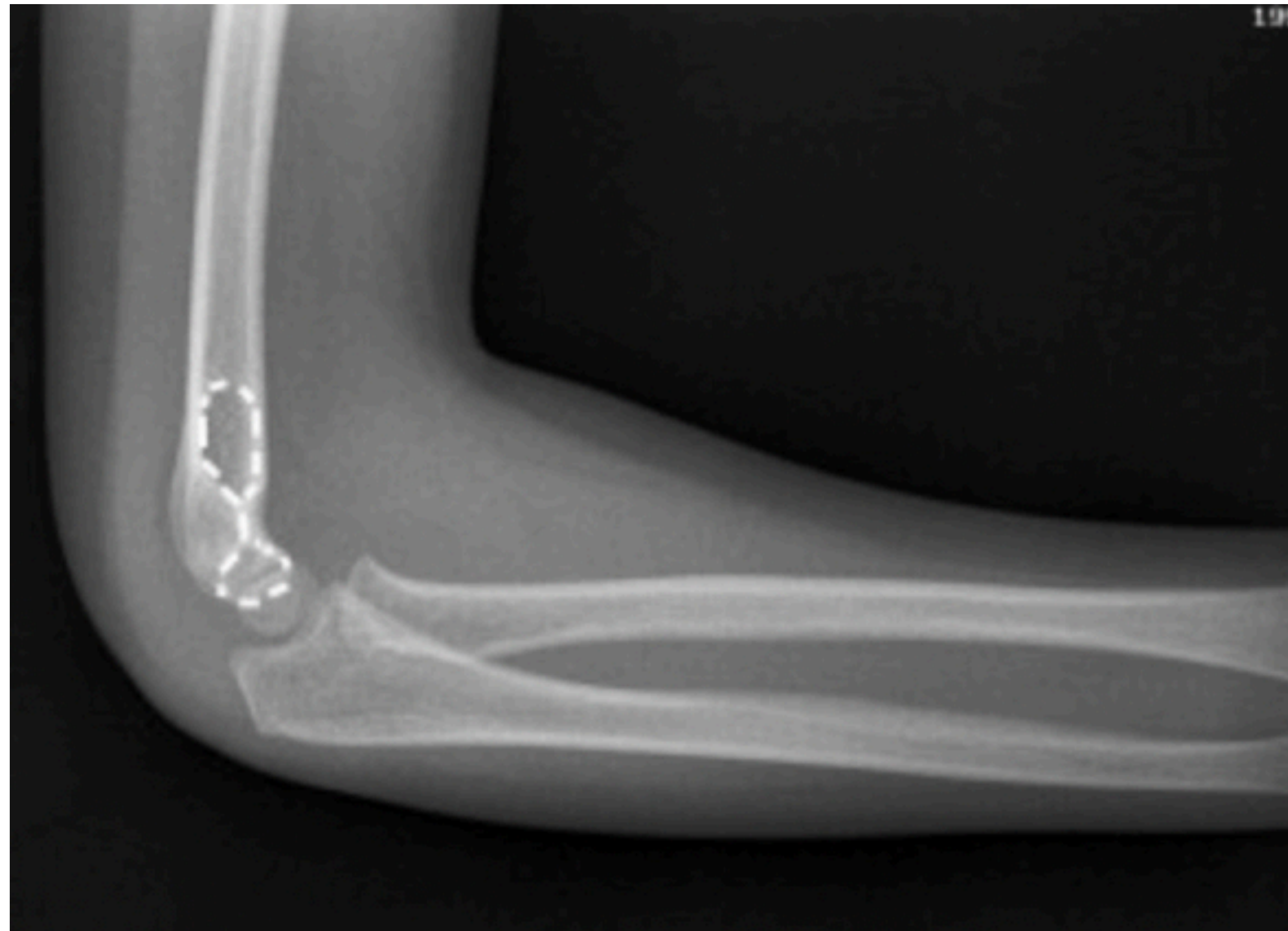
Rammy Assaf  
August 17, 2021

# 8 Steps

1. Check your lateral is really a lateral
2. Look for an anterior fat pad
3. Look for a posterior fat pad
4. Check the anterior humeral line
5. Check the radio-capitellar line
6. Look at the angle of the radial head
7. Check the cortex lines of the distal humerus
8. Go through all the ossification centers

# Step 1/8

**Check your lateral is really a lateral**



Tessa Davis. Elbow X-Rays, Don't Forget the Bubbles, 2013. Available at: <https://doi.org/10.31440/DFTB.4522>

# Step 2/8

**Look for an anterior fat pad**





# Step 3/8

Look for a posterior fat pad



# Step 4/8

## Check the anterior humeral line



# Step 5/8

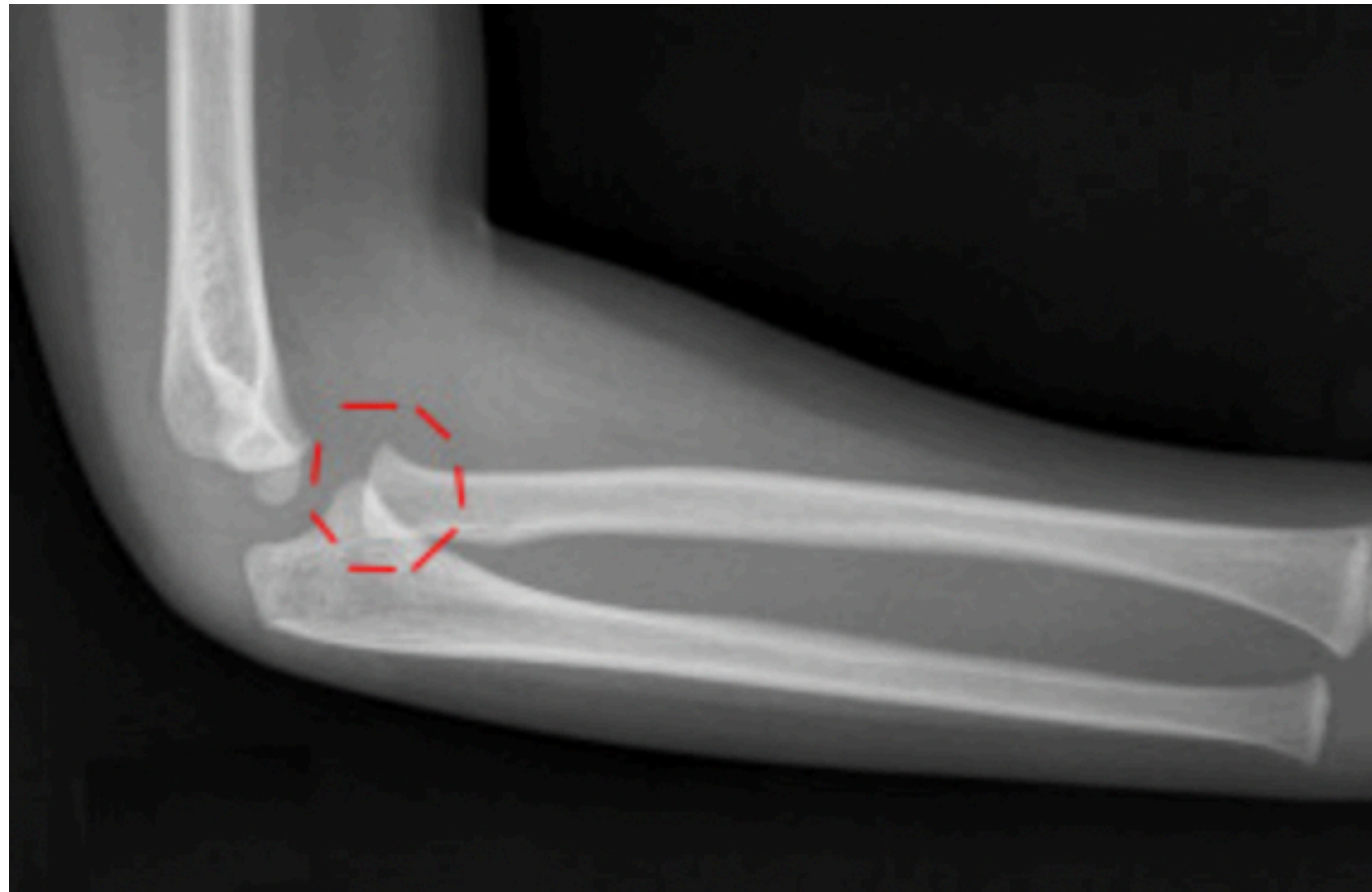
## Check the radio-capitellar line





# Step 6/8

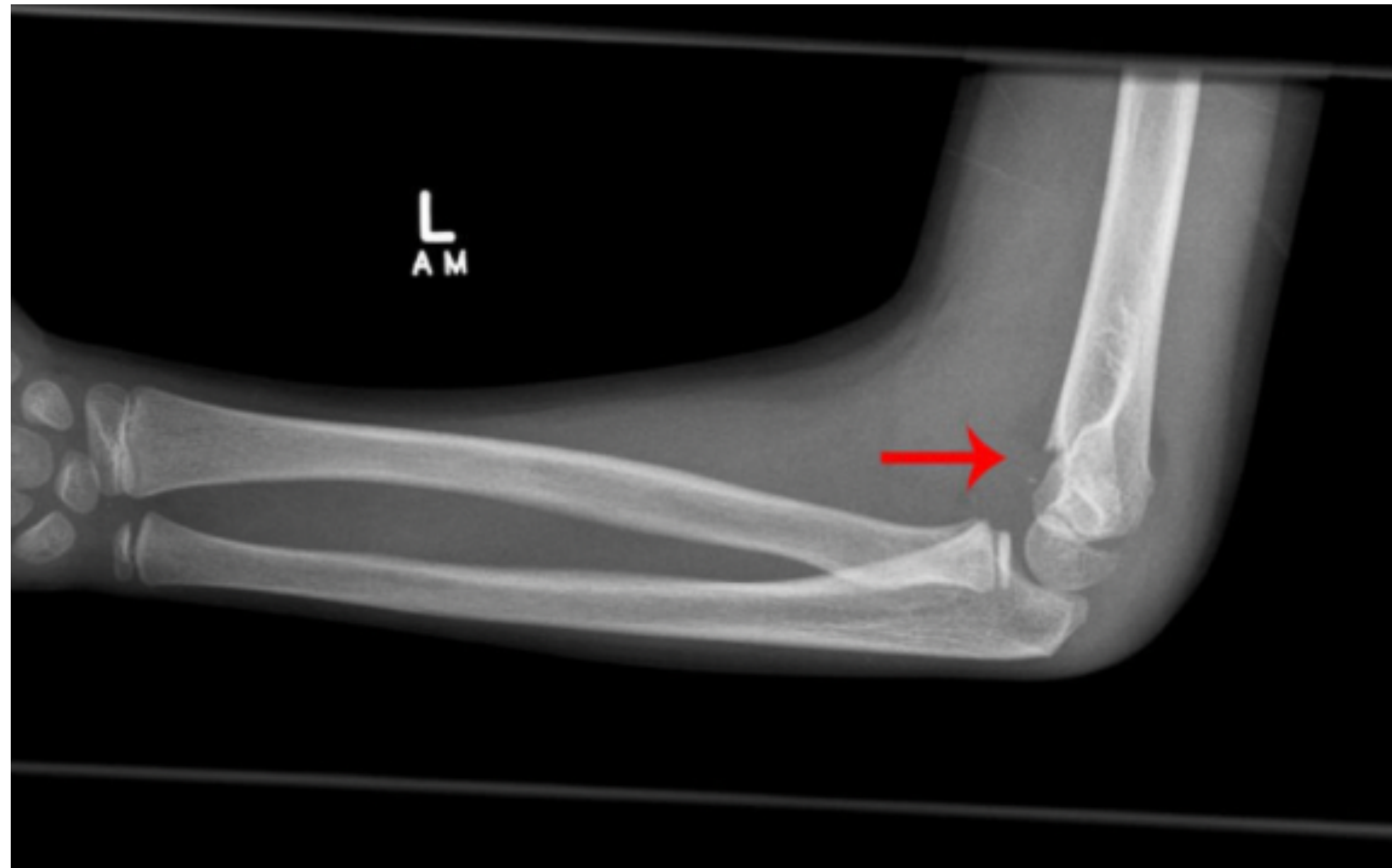
**Look at the angle of the radial head**





# Step 7/8

**Check the cortex lines of the distal humerus**



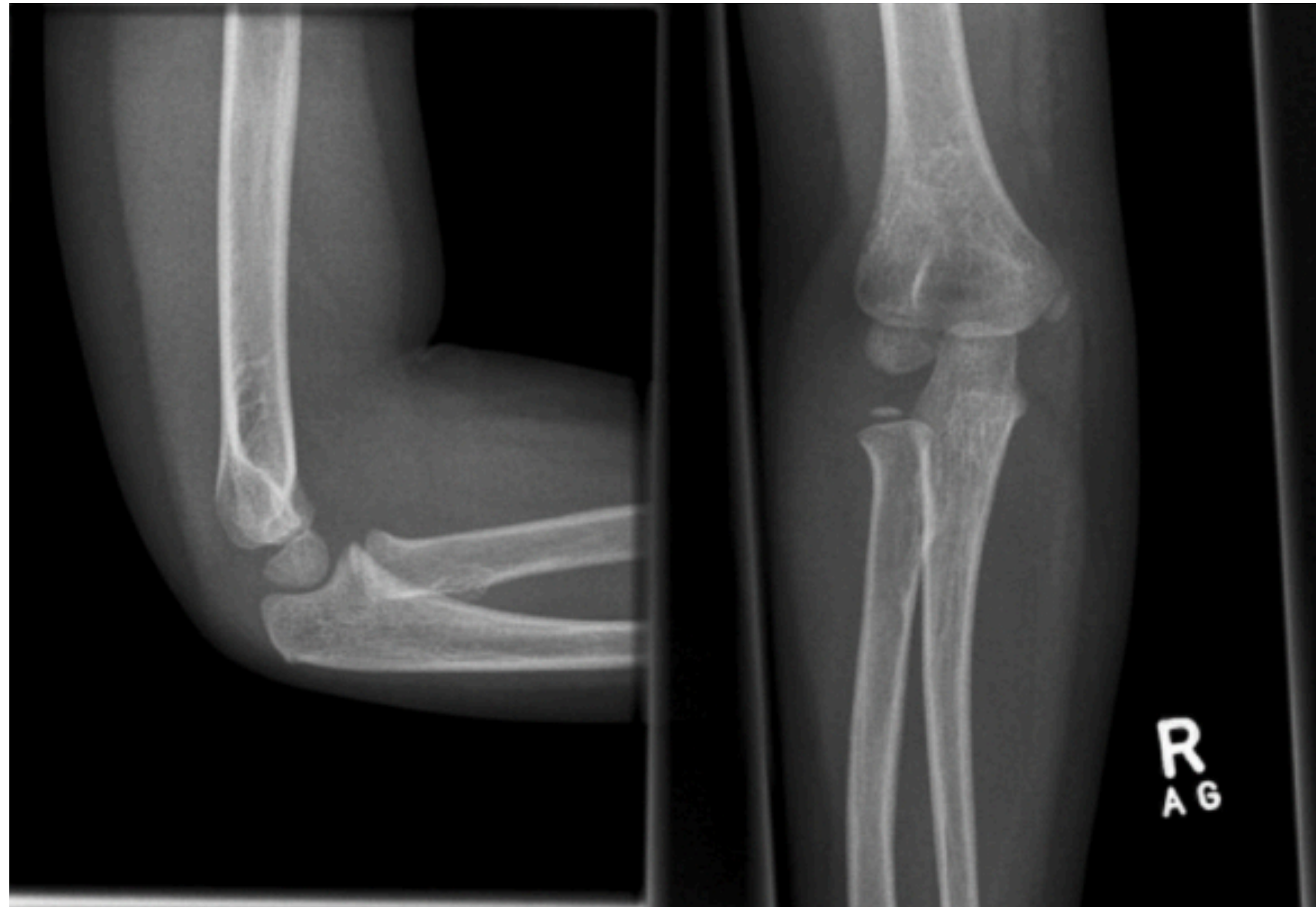
# Step 8/8

Go through all the ossification centers



CRITOE	
Capitellum	1
Radial head	3
Int Epicondyle	5
Trochlea	7
Olecranon	9
Ext Epicondyle	11

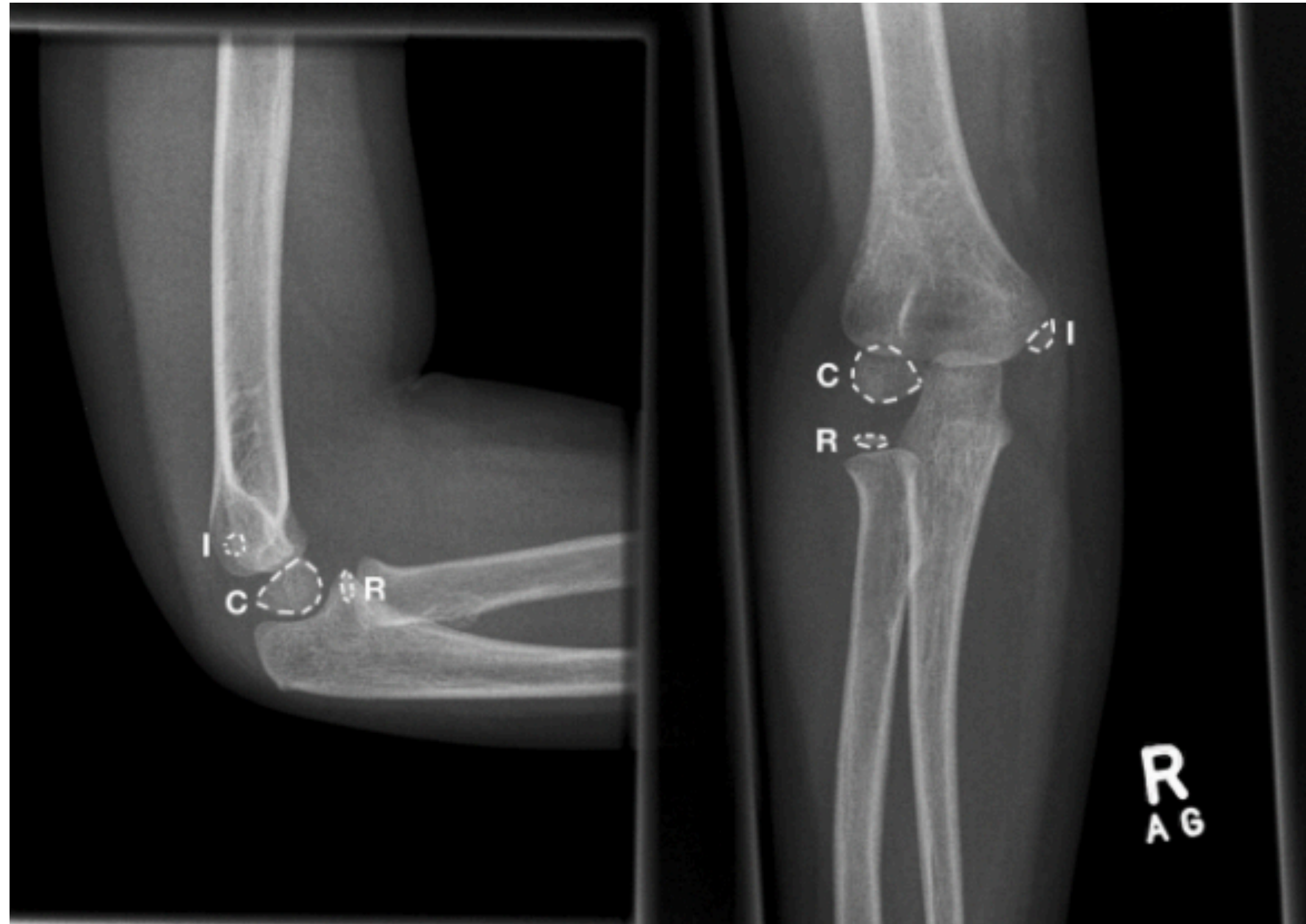
**Q1: What is the age of this child?**





# Q1: What is the age of this child?

6 years old





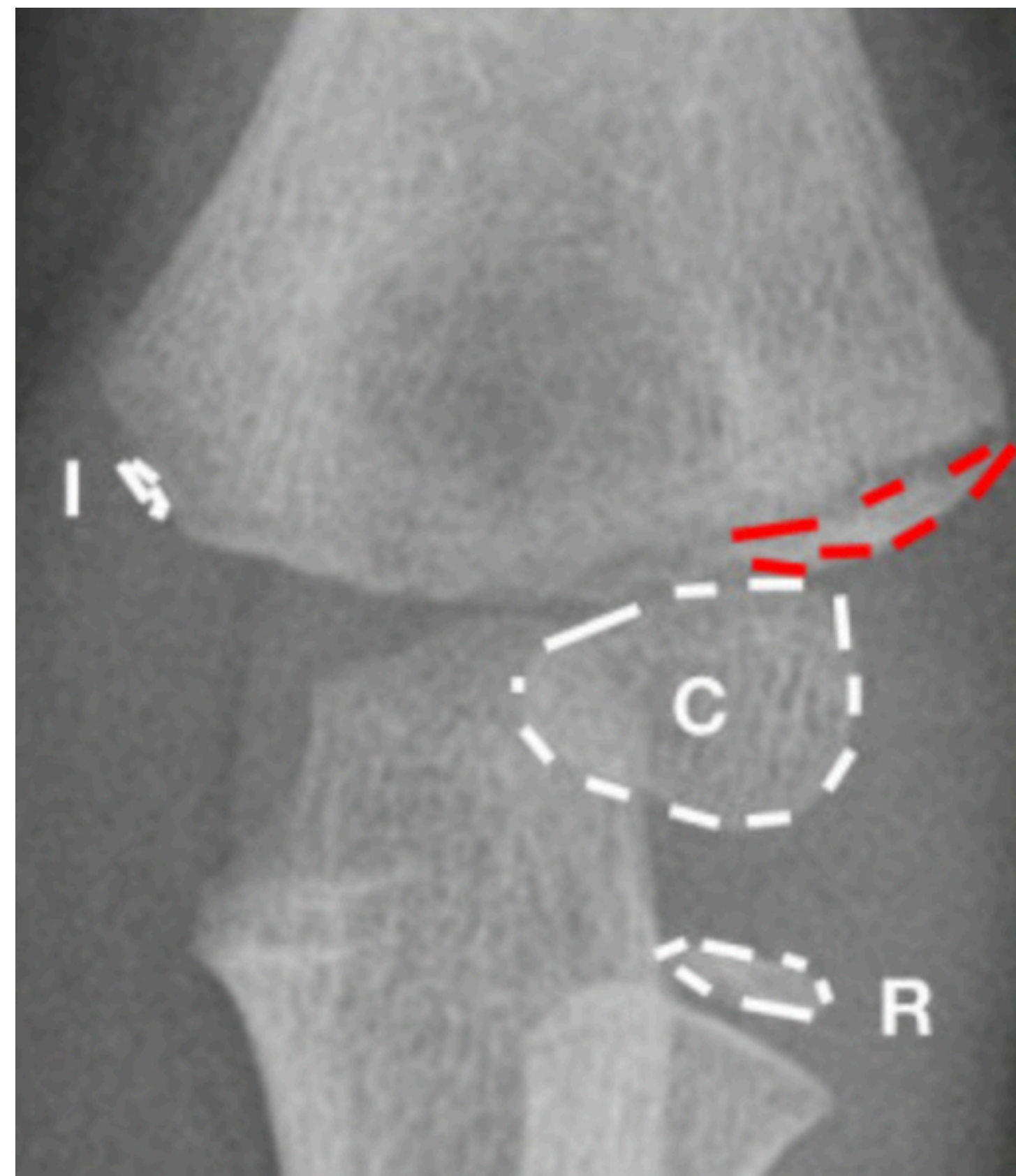
## **Q2: What is the abnormality shown?**

**Child fell onto the lateral aspect of her elbow**



# Q2: What is the abnormality shown?

**Lateral condyle avulsion**





# Q3: What is the abnormality shown?

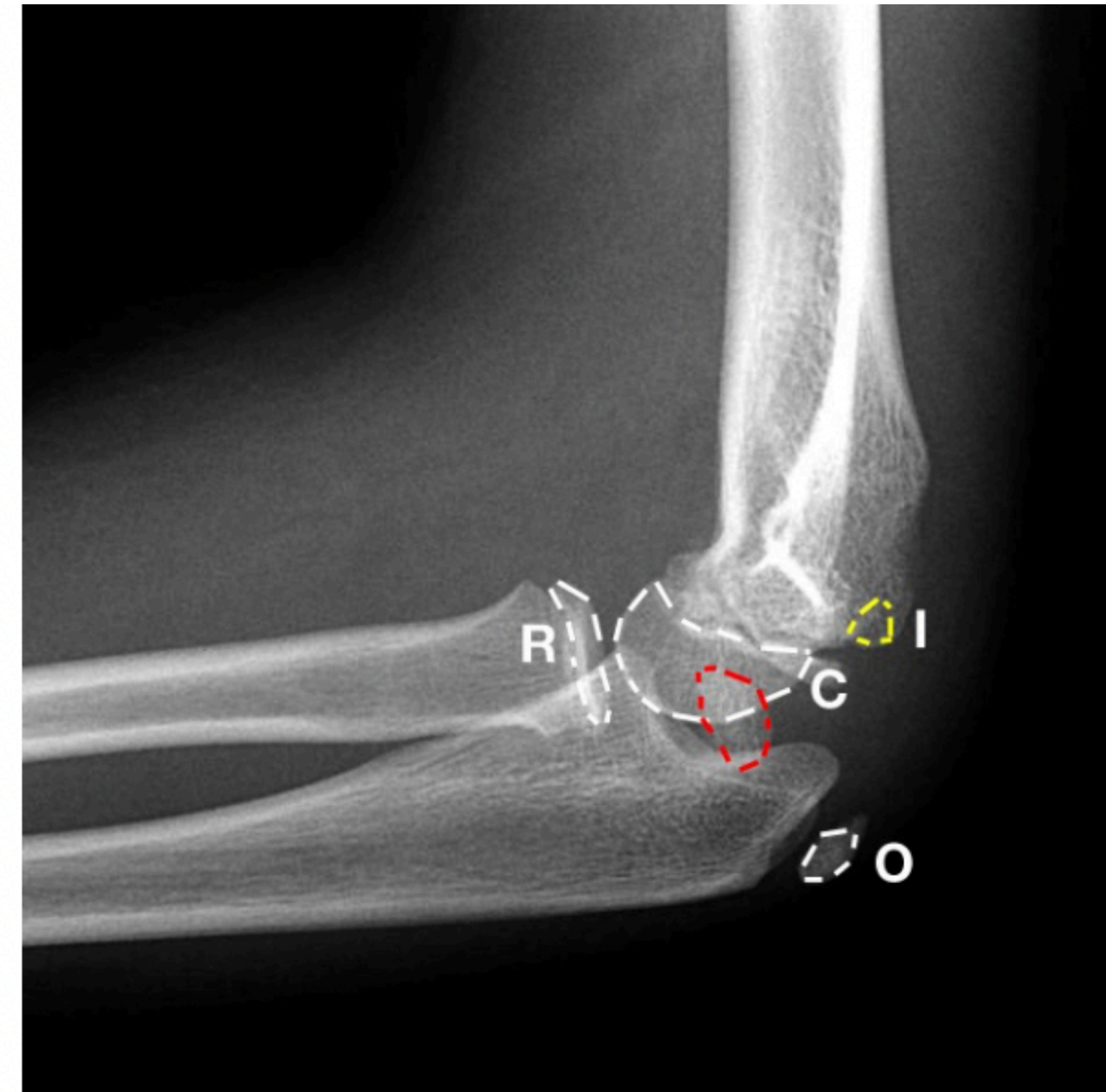
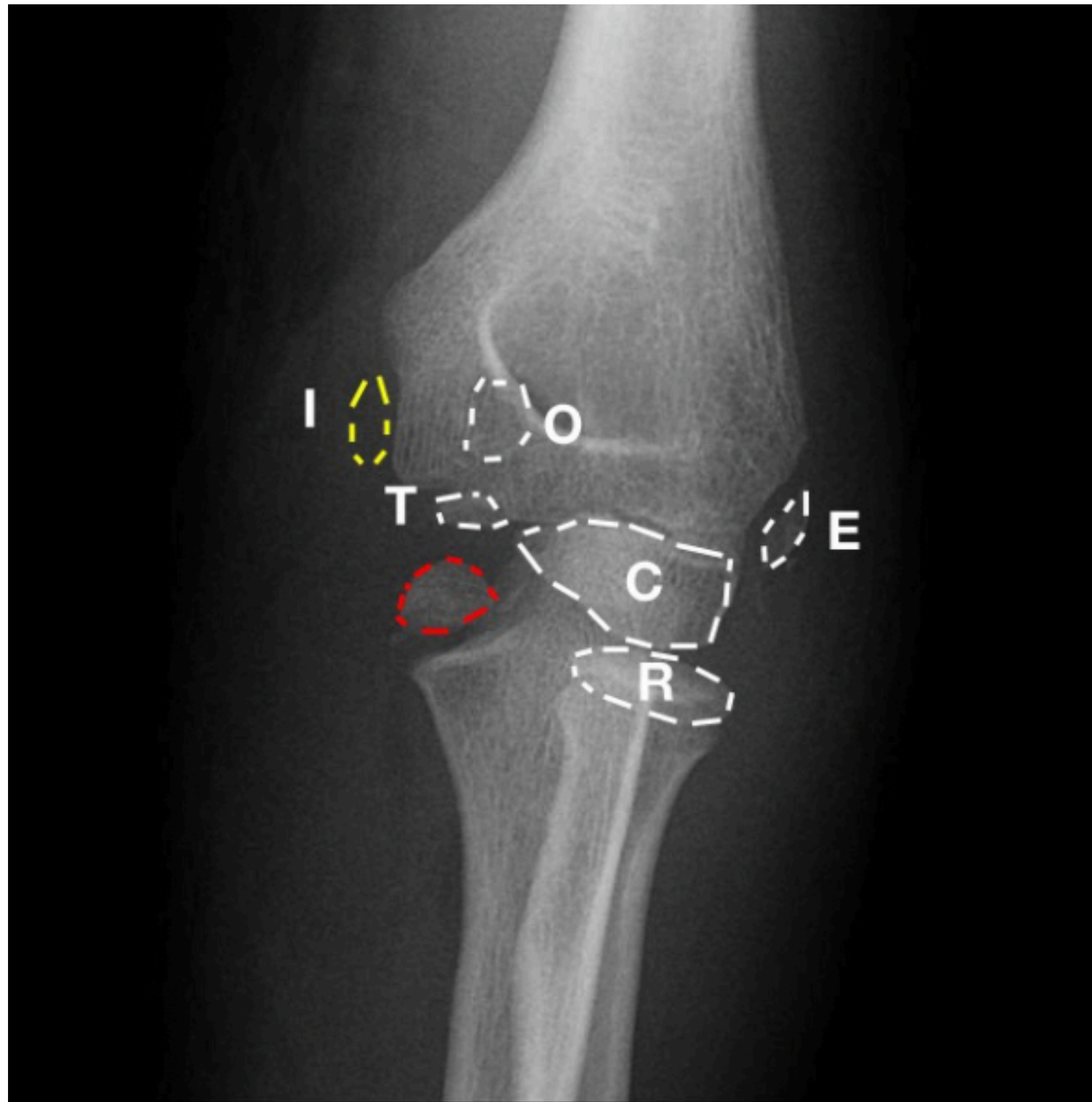
12yo boy fell onto outstretched hand





# Q3: What is the abnormality shown?

Medial epicondyle avulsion





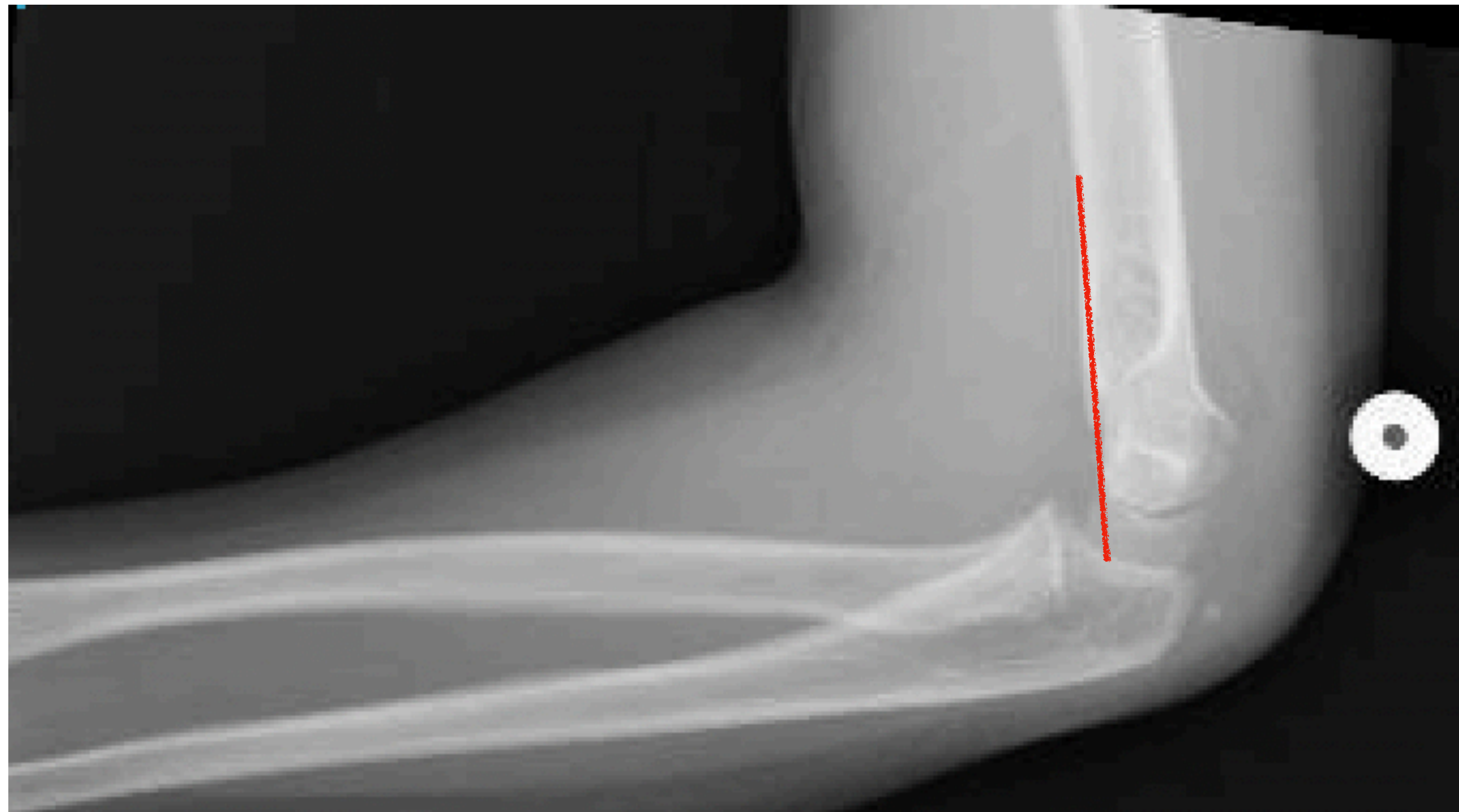
## Q4: What abnormality is shown?

8yo girl with GLF while left arm was stuck in doggy gate



# Q4: What abnormality is shown?

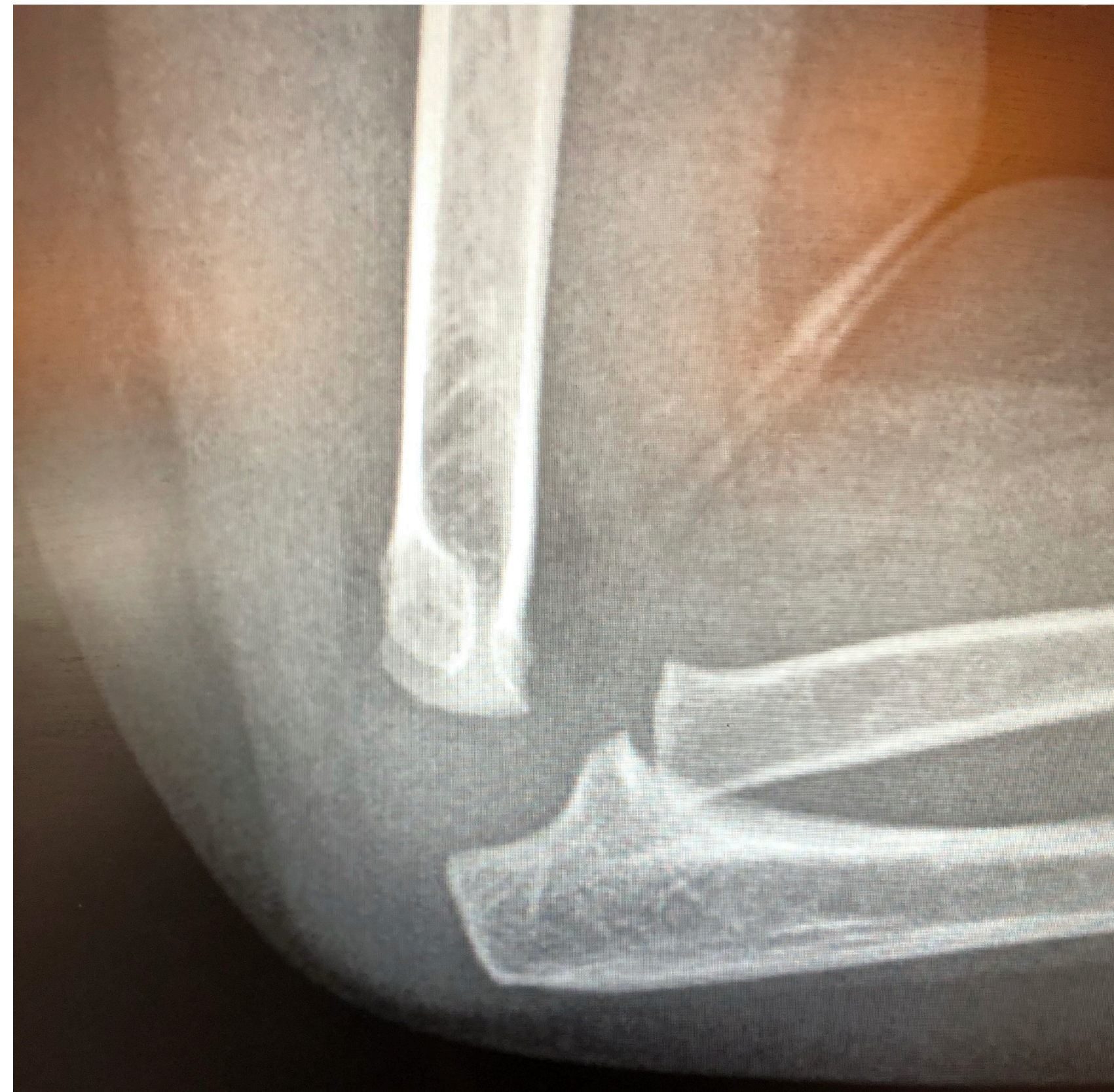
Type 2 SCF





# Q5: What abnormality is shown?

1yo GLF





# Q5: What abnormality is shown?

**Occult elbow fracture**





# Q6: What abnormality is shown?

10yo with FOOSH injury





# Q6: What abnormality is shown?

Type 1 SCF

