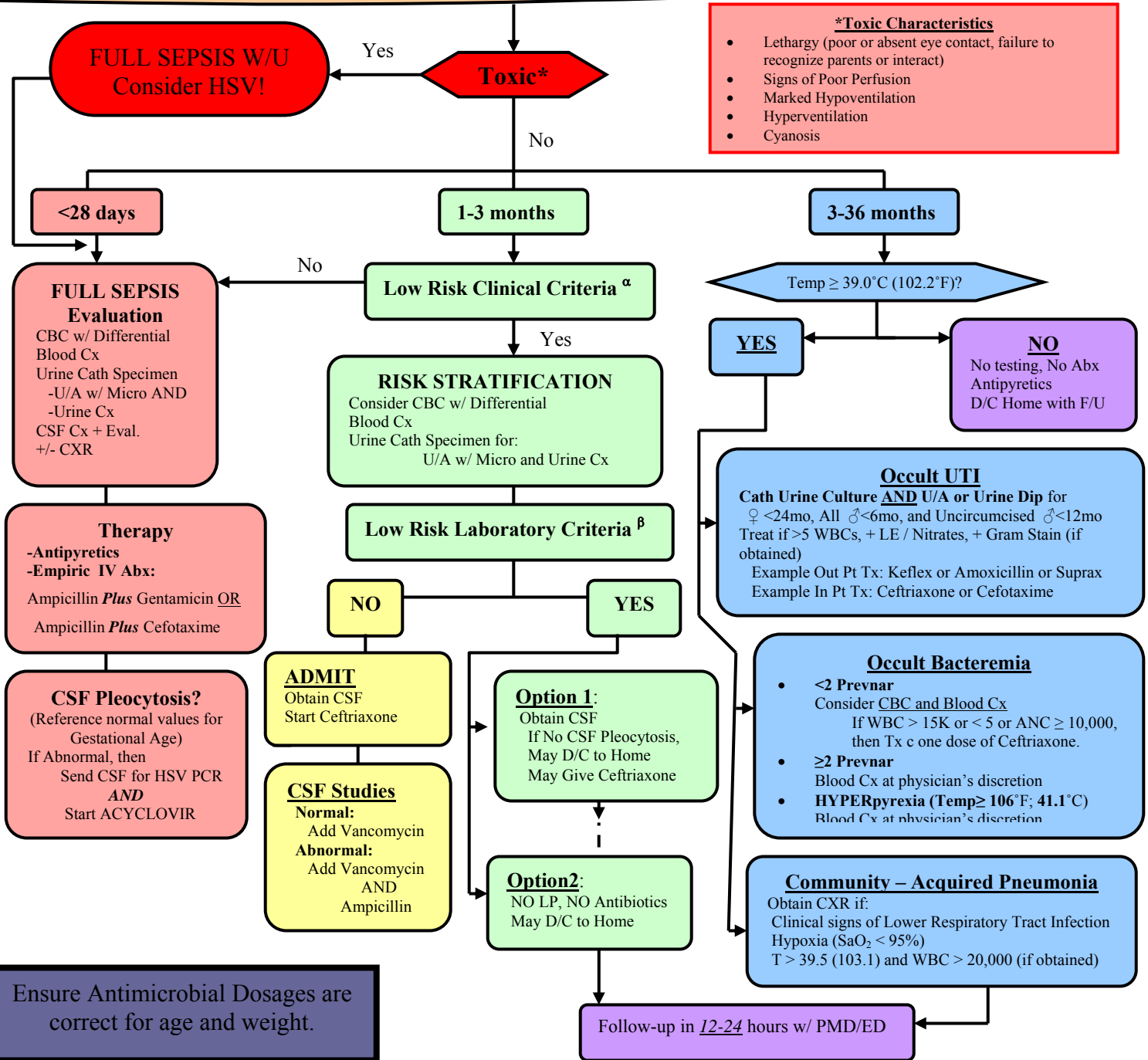


Previously Healthy, Full Term Infant with Fever ($T \geq 100.4^{\circ}\text{F}$; 38°C)[ⓧ] *WITHOUT* a Source



[ⓧ] Includes Fever detected at home.

Social Considerations for Safe D/C Home

- Functioning Home Telephone Number
- Transportation readily available
- Parental Maturity
- Thermometer available at home
- Good social situation
- Travel time to ED < 30 minutes

Low-Risk Criteria

[ⓐ] Clinical Criteria:

- Previously Healthy, Term infant with uncomplicated Nursery Stay
- NonToxic Clinical Appearance*
- No Focal bacterial infection on examination

[ⓑ] Laboratory Criteria:

- WBC 5-15,000, $< 1,500$ bands, or Bands / ANC ratio < 0.2
- Negative Gram stain of urine (cath'd), or negative LE and nitrite on U/A, or < 5 WBCs/hpf
- When diarrhea present: < 5 WBCs/hpf in stool